



CRANE SAFETY EXPERT



微 特 技 术 有 限 公 司  
WEITE TECHNOLOGIES CO., LTD.



**Professional**

18 years only focus on one thing  
Lifting equipment safety management field



Click for video



# Important honor



**National high-tech enterprise**



**National service manufacturing demonstration platform enterprise**



**Defend the contract , heavy credit enterprise**



**Industrial design enterprise**



**Innovative development demonstration enterprise**





# Remarkable patent achievements for R & D Innovation



**National high-tech  
enterprise**

## 116 patents

By 2017, total 116 intellectual property rights. the remote communication and technology support invention patent and remote electric control patent are the core technologies of the "smart lifting" of the Internet of things. .



## 4 scientific achievements

Two provincial-level scientific and technological achievements, 2 municipal major scientific and technological achievements, at the project appraisal meeting, domestic experts unanimously evaluated WTAU as the international advanced level.

## 1 Science-technology Progress Prize

In 2015, the "lifting equipment intelligent safety protection and monitoring system" project was identified as the international advanced level and won the science and technology progress award of hubei province.



As industry experts participate in the drafting of the national standard.

▶ Company profile



National standard committee



### 3 National standard committee member

Specially appointed as technical member of "National Lifting Machinery Standardization Technical Committee of the Boom section, Electrical Working section, Bridge and Portal section)

### 4 National standard drafting

1. National standard GB 6067.5-2014 (Bridge and gantry crane);
2. National standard GB/T31052.4-2017 (Boom crane);
3. National standard GB/T31052.12-2017 (Floating crane);
4. National standard GB/T 28264 《lifting machine safe monitoring system》。

### Undertake the national standard conference.

Undertake repeatedly 《inspection & maintenance procedures of lifting machinery》 discussion meeting ; GB/T 28264-2012 《Safe monitoring system of lifting machinery》





# Industry-leader for sensor lab.

▶ Company profile



In addition to the colleges and universities, Weite is the first private enterprise have laboratory in the industry.

[点击查看设备](#)





Authority certification  
Quality assurance



CCS

ISO9001: 2008

CE

Grade A qualification  
Upgrading and  
maintenance

Special equipment  
test certificate.



Each product of WTAU company has to be tested rigorously by the sensor lab. Adhere to strict quality management to ensure the quality of each product, It's not about getting certified, it's about the mission: making it safer and more reliable.



was founded in Jan, 2002 。

2002



In 2009, load moment indicator products were certified by China classification society, and the products began to be applied to the Marine industry.

2009

2010



2011 April, 34200TM very large load moment indicator production qualification; 2400 t floating crane moment limiter successfully applied for Shanghai expo.

2011

2013



In December 2009, WTAU was identified by the ministry of science & technology, the ministry of finance, the state administration and the local of taxation bureau as national high-tech enterprise , which was the first national high-tech enterprise in the field at that time.



In January 2013, we obtained the invention patent for remote communication and technology support, and the remote electrical control patent. Hold the core intellectual property of the Internet of things.





In December 2013, WTAU R&D building was completed, WTAU moved to a new home.

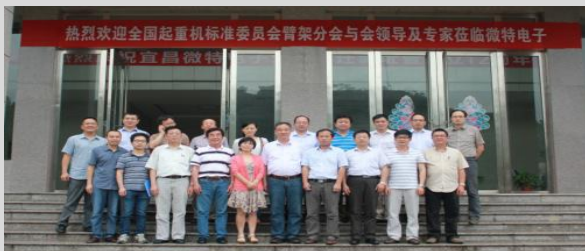


On Nov.29, 2014, WTAU was featured on the front page of People's Daily, to introduce the experience of the R&D gaining more than 40 patents

2014

2015

2016



In June 2014, the arm frame of the national crane standard committee held two national standard discussions in WTAU



In June 2015, WTAU held a discussion forum on GB/T 28264-2012 for "lifting machinery safety monitoring and management system".

- In December 2015, the project of "intelligent safety protection and monitoring system for lifting equipment" was identified as the international advanced level and won the third prize of science & technology progress of hubei province.



## Deep ploughing 4 industries



**Road and  
bridge  
construction**



**Marine  
engineering &  
energy**



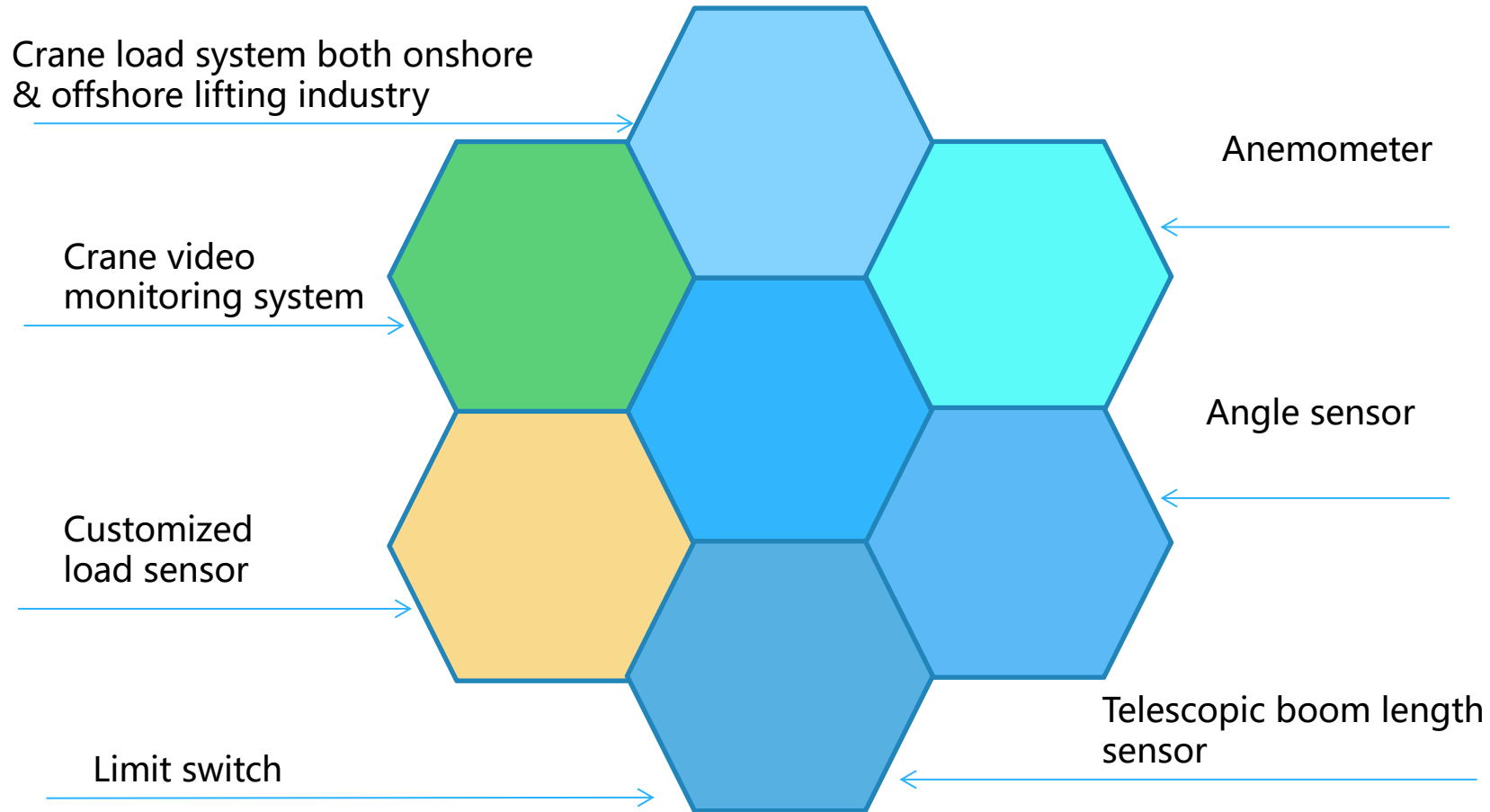
**Steel &  
shipbuilding**



**Hydropower**



## Product list



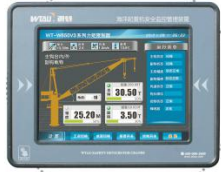




# Crane safety monitoring system



Monitoring instrument



Load moment indicator system



Camera



Hard disk video recorder



Wind speed sensor



Angle sensor



Main/auxiliary hook lifting height(encoder)



DXZ limit switch



Rotary sensor

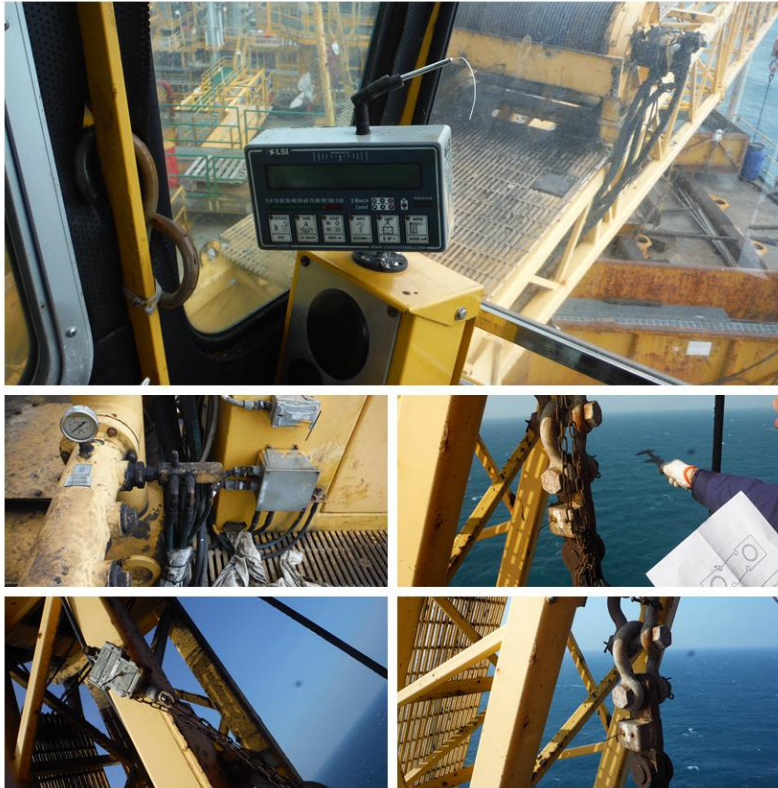


Azimuth sensor

[Return](#)



## Offshore crane loading system



Old Robway wireless system



Substitute WTAU cable system

[Return](#)





## Cement tank loading system & CCTV system



Cement tank loading system



CCTV system for offshore crane





# loading system for big capacity floating crane



3600t floating crane for project Pingtan bridge



2400t floating crane for project Padma bridge Bangladesh



## Loading system for anchor winch & piling ship crane



Anchor winch loading system for “Nan Tianlong” Salvage ship



Loading system for the biggest piling ship in the world “San Hang Pile 20”





中海油海洋平台起重机



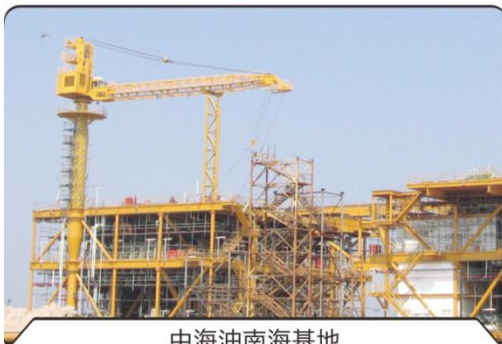
中石化钻井平台起重机



中石化胜利海洋钻井平台起重机



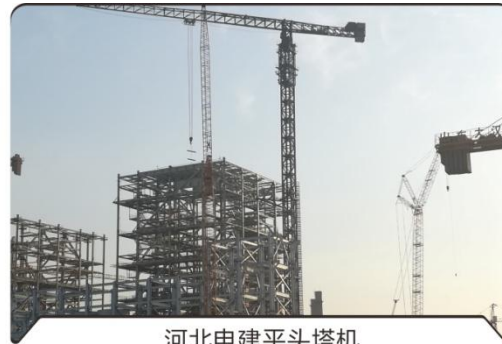
中石油吊管机



中海油南海基地



福建电建动臂塔机



河北电建平头塔机



浙江火电南阳电厂动臂塔机



武汉船用机械厂海洋吊



新加坡TAT HONG公司履带吊



越南TAT HONG公司300T履带吊



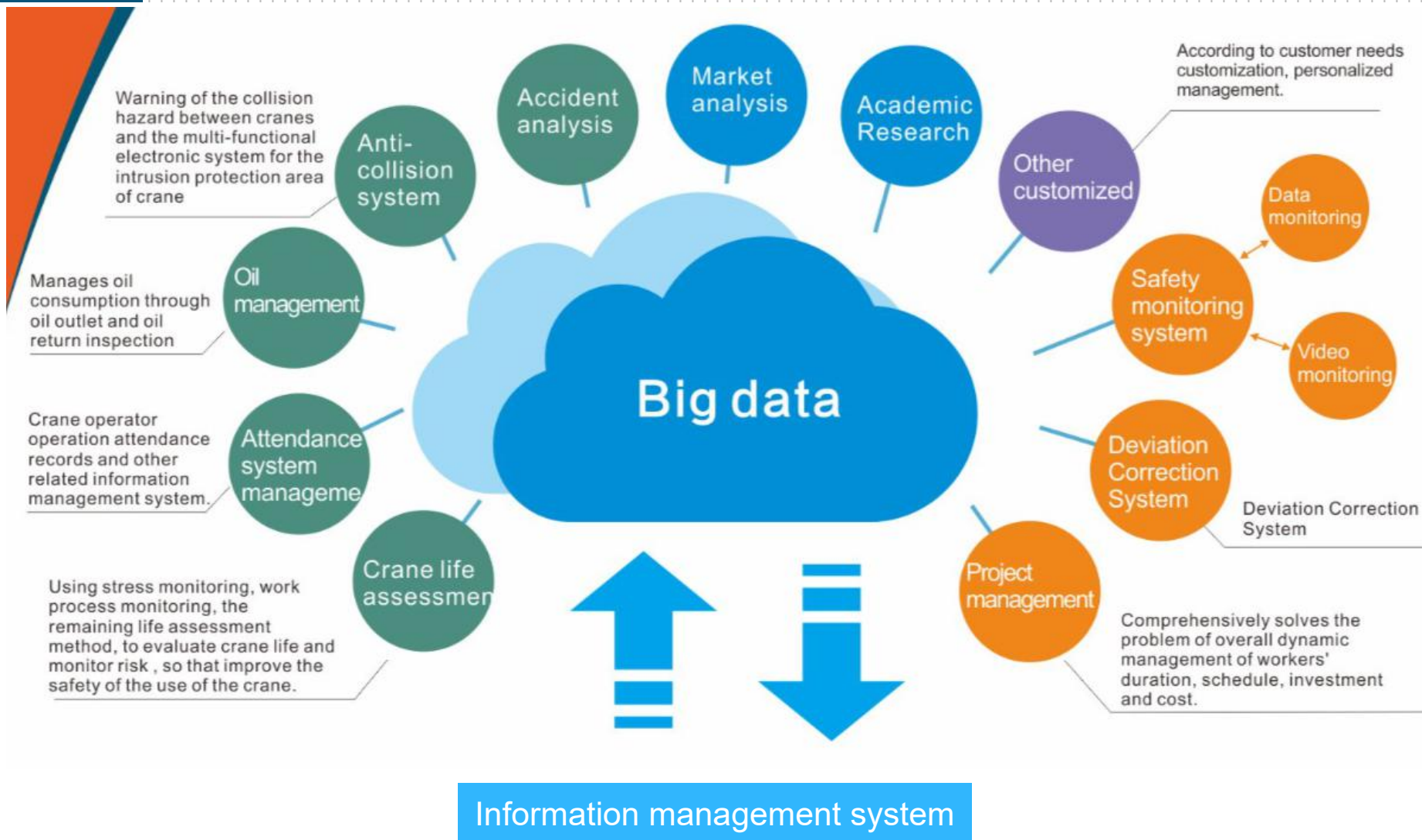
Sankyu Inc 日本山九集团马来西亚分公司履带吊

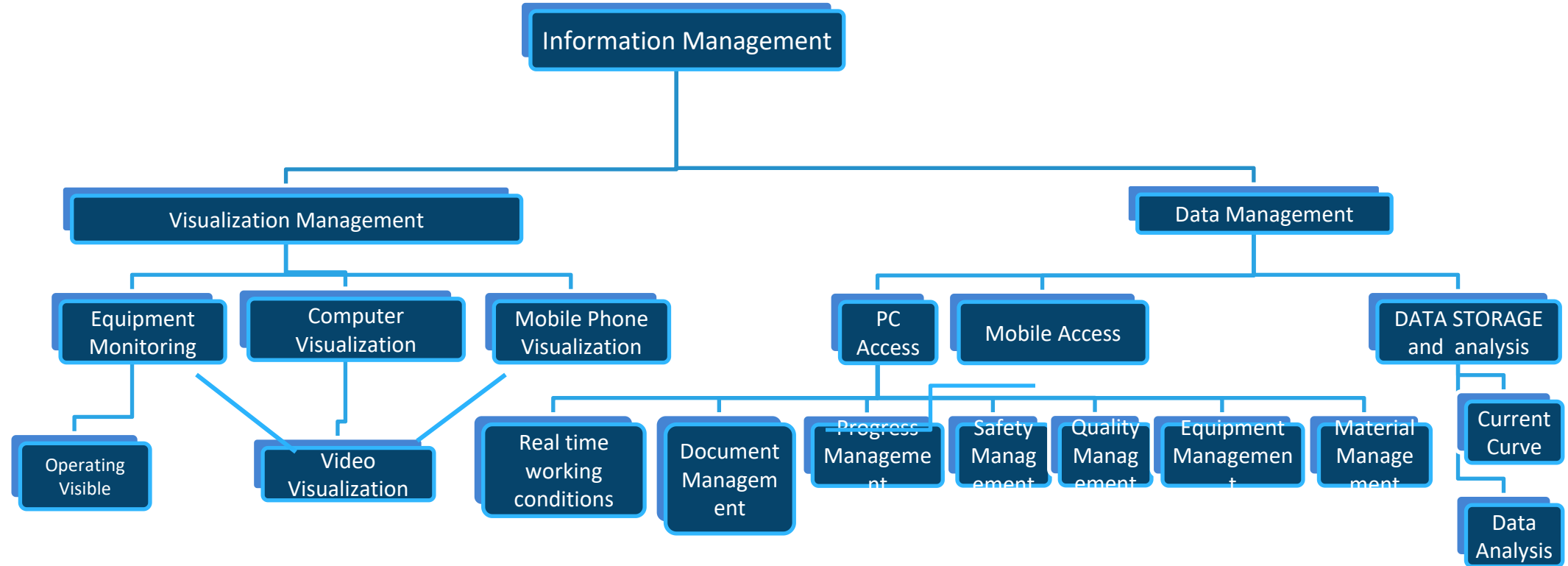
Weite has accumulated rich field experience in various industries to provide users with reliable security management solutions.





# Information management system







## Client lists



中国中船重工集团



中国铝业股份有限公司



中国核工业集团北京原子能研究所



CIMC RAFFLES



卫华集团



中国冶金建设集团



华西海工



招商局重工 (深圳) 有限公司



With China's strategy of "one belt one road", more and more overseas engineering business serviced by WTAU, meanwhile WTAU accelerating to the development of global market, successively setting the agent and service point in Indonesia, Singapore, Malaysia, Thailand etc...



## More WTAU users

### Traffic bridge



### Marine & energy



### Steel & shipbuilding



### Hydropower





## Labor model innovation technology team



Co-founder, technical director & deputy general manager  
Member of national crane standardization committee.  
Labor model of hubei province in 2013.  
Technical engineer team reaches 20 people.  
Hubei provincial school-enterprise co-construction lifting  
safety intellectual control R&D center.









微特技术有限公司

WEITE TECHNOLOGIES CO.,LTD.

No.6 Gangcheng Road, Yichang, Free Trade Zone(Hubei) China.

Web.: weite.tech

Welcome!